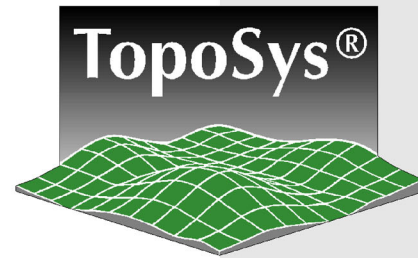


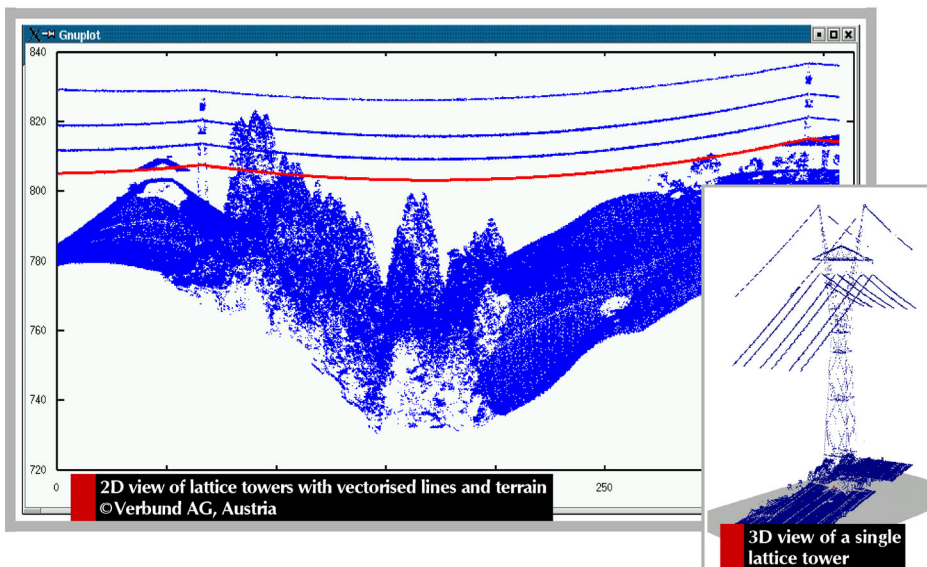
LIDAR - APPLICATIONS

Power Lines



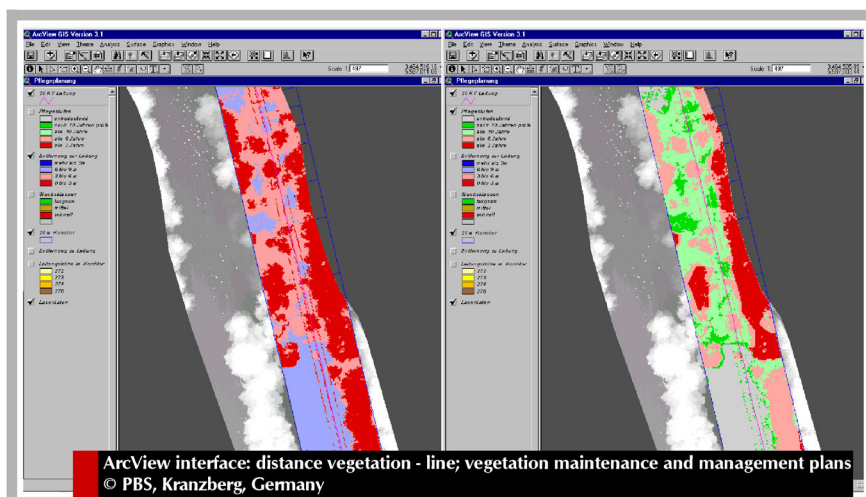
TopoSys elevation models and orthophotos as high resolution database for:

- acquisition of terrain elevation in the power line corridor
- mapping of vegetation, land use and infrastructure
- creation of power line information and maintenance systems



TopoSys laser data as basis for:

- 2D and 3D presentation of power line pylons
- determination of pylon centers and suspension points
- vectorisation of power lines



TopoSys elevation data and extracted vectorised power lines as input data for geoinformation systems (i.e. ArcView):

- determination of the clearance between vegetation and power line
- creation of vegetation maintenance and management plans
- overlaying with additional geo-information