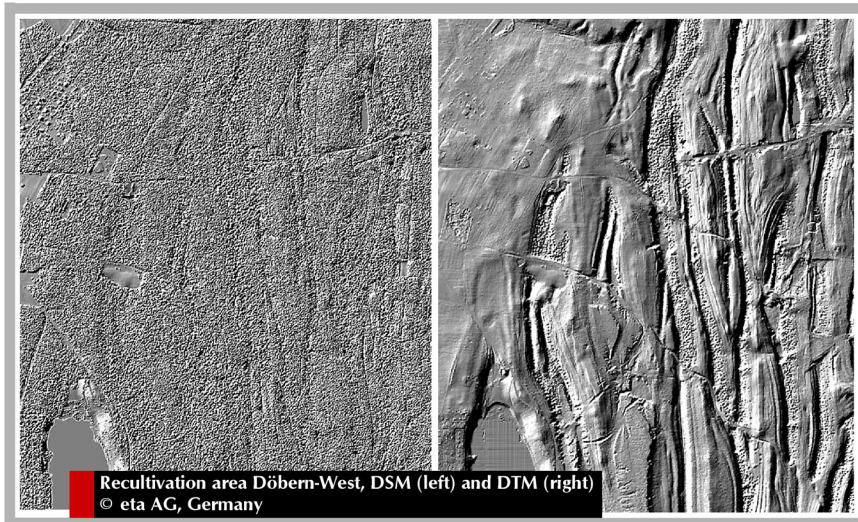
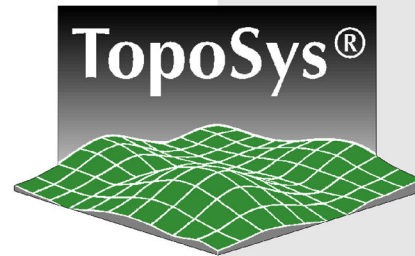


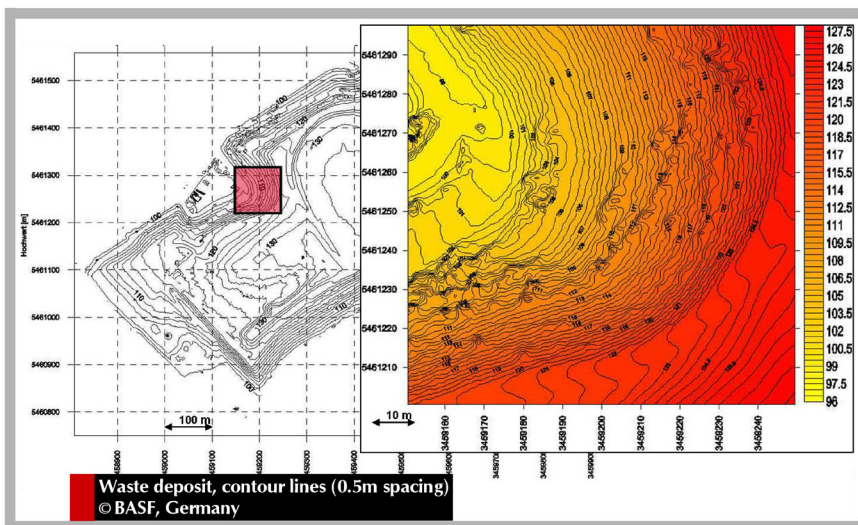
LIDAR - APPLICATIONS

Surface Mining and Deposits



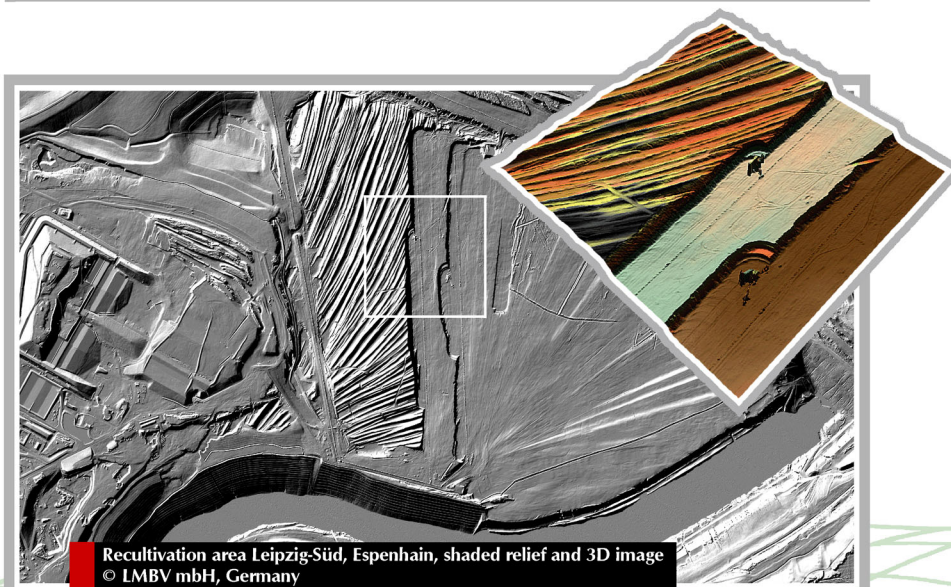
TopoSys elevation models (DSM and DTM) of closed open pit mines serve as high resolution basic data set for:

- change monitoring of the landscape (DSM)
- detection of break lines and processes of subsidence (DTM)
- designation of zones threatened to collapse
- planning of recultivation measures
- environmental compatibility studies



Extraction of contour lines out of the TopoSys elevation models for:

- monitoring of degradation and refilling
- detection of subsidences caused by mining
- overlay with additional information in a GIS



TopoSys elevation data of active open pit mines and recultivation areas as basis for:

- official approval procedures
- efficiency and security controls
- computation of volumes
- simulations of arising ground water