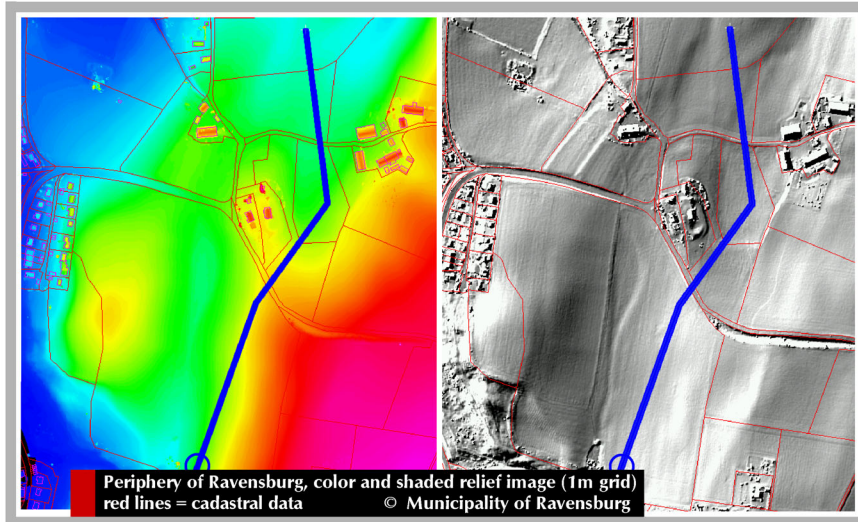
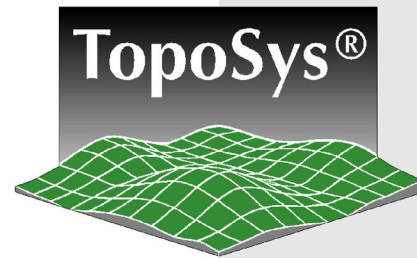


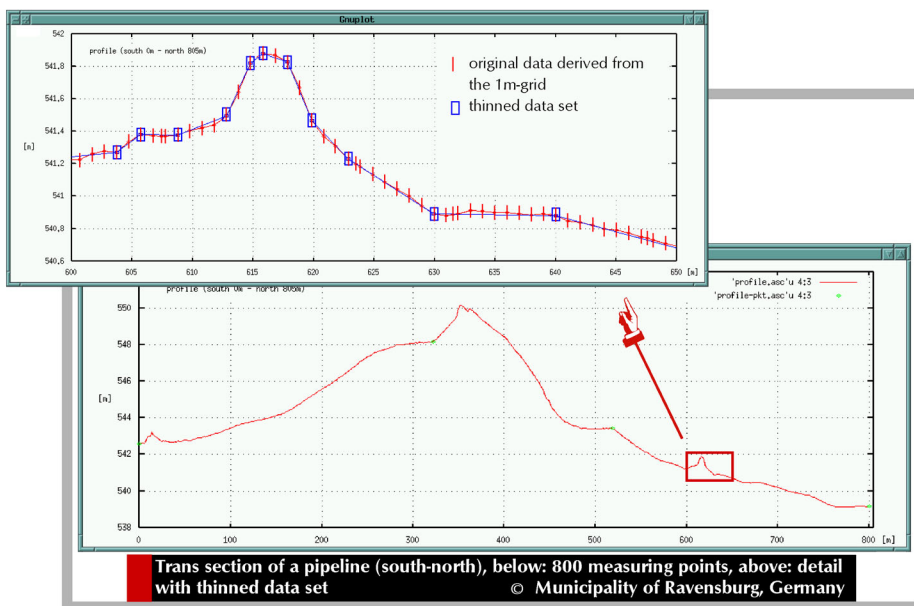
LIDAR - APPLICATIONS

Pipelines and Transmission Lines



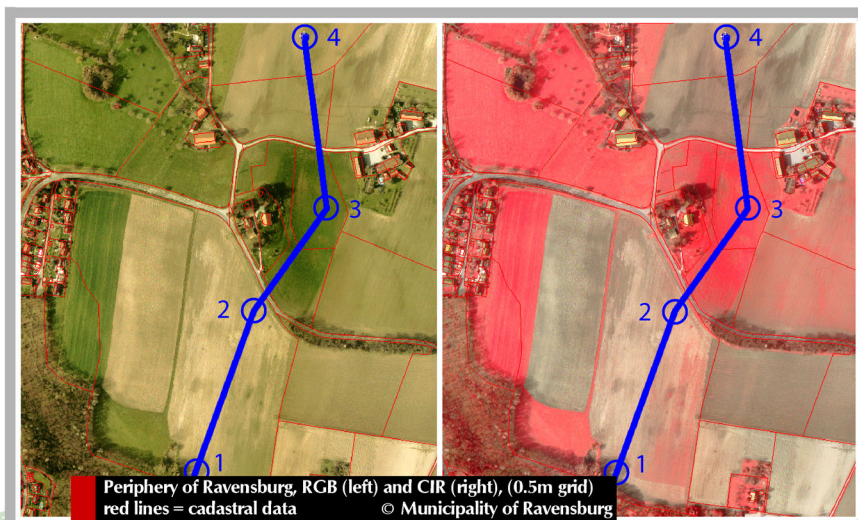
TopoSys surface model (DSM) as high resolution basis data set for:

- planning of corridors for overhead transmission lines, pipelines (water, gas, oil), highways and railway
- optimisation of courses of routes and lines
- computation of high precision trans- and crosssections with variable intervals
- overlay with cadastral data



Extraction of profiles with the objective of:

- determination of the line of sight (LOS) between radio towers
- estimation of slopes of pipeline corridors (water, gas, oil)
- determination of ground excavation and distance to soil surface



TopoSys ortho images (RGB and CIR) as basis for:

- planning, maintenance and monitoring of any kind of corridors